

# Greener Living. Better Aging.

## Enhancing the Resident Experience with Environmental Wellness



### Executive Summary

Sustainability in senior living communities has evolved from a value-add to a strategic imperative. Today's residents, families, and operators increasingly expect environments that promote wellness, environmental responsibility, and long-term resilience. Research shows that 73% of global consumers are willing to change consumption habits to reduce environmental impact (Nielsen), while in healthcare and senior living, sustainability initiatives have been linked to improved health outcomes, reduced costs, and stronger resident satisfaction. This white paper explores how sustainable practices enhance senior living communities, highlighting NEXDINE Hospitality's approach, its partnership with Peconic Landing, and the role of sustainable dining and responsible sourcing in shaping modern community experiences.



### The Importance of Sustainability in Senior Living

Senior living communities operate at the intersection of hospitality and healthcare, making sustainability particularly impactful. Environmental conditions, food quality, and daily operational practices directly influence resident well-being.

Studies from the U.S. Environmental Protection Agency (EPA) indicate that improved indoor environmental quality can enhance occupant health and productivity, while access to green space has been associated with reduced stress, improved cognitive function, and lower rates of chronic disease (Harvard T.H. Chan School of Public Health).

At the same time, the senior living sector faces increasing financial pressure. The U.S. Department of Energy reports that energy-efficient buildings can reduce operating costs by 10–30%, while food waste reduction programs can cut food costs by as much as 2–6% (ReFED). These efficiencies are especially meaningful in communities where dining and facility operations represent a significant portion of expenses.

Sustainability, therefore, is not simply an environmental initiative—it is a comprehensive strategy that enhances resident health, strengthens financial performance, and elevates community reputation.

### The Blue Zone Philosophy and Peconic Landing

Peconic Landing, a premier life plan community and NEXDINE partner, demonstrates how sustainability and wellness intersect through its Blue Zone-inspired programming. The Blue Zone concept is based on research conducted by Dan Buettner and National Geographic, identifying regions where people live significantly longer, healthier lives.

# Greener Living. Better Aging.

## Enhancing the Resident Experience with Environmental Wellness

These populations share common lifestyle traits, including plant-forward diets, strong social connections, daily movement, and a sense of purpose. Studies of Blue Zone populations show lower rates of chronic disease and higher life expectancy, with some regions reporting life spans exceeding global averages by up to a decade.

Peconic Landing integrates these principles into its sustainability efforts by creating an environment that supports both ecological responsibility and human longevity. Residents benefit from thoughtfully designed spaces that encourage movement and outdoor engagement, as well as dining programs centered on fresh, nutrient-dense, and responsibly sourced foods. Social connectivity—another key Blue Zone pillar—is reinforced through shared dining experiences and community programming.

This holistic approach illustrates how sustainability can move beyond operational practices to become a defining element of lifestyle and culture within a senior living community.

### **NEXDINE Hospitality's Sustainable Approach**

NEXDINE Hospitality embeds sustainability into every aspect of its operations, aligning environmental stewardship with hospitality excellence. Across the foodservice industry, sustainability initiatives have been shown to significantly reduce environmental impact; for example, the World Resources Institute estimates that approximately one-third of all food produced globally is lost or wasted, contributing nearly 8–10% of global greenhouse gas emissions.

In response, NEXDINE prioritizes waste reduction strategies such as food waste tracking, composting, and optimized production practices. These efforts not only reduce environmental impact but also align with industry findings that food waste reduction can deliver a 14:1 return on investment (Champions 12.3).

Energy-conscious operations further support sustainability goals. According to ENERGY STAR,



commercial kitchens that adopt energy-efficient equipment can reduce energy use by 10–30%, contributing to both cost savings and carbon reduction. NEXDINE integrates these practices into its operational model while also emphasizing local sourcing to reduce transportation emissions and support regional economies.

Through this integrated approach, sustainability becomes a driver of both environmental and operational performance.

### **Sustainable Dining: A Foundational Pillar**

Dining is one of the most visible and impactful components of senior living, influencing both resident satisfaction and health outcomes. NEXDINE's sustainable dining approach centers on fresh, seasonal, and responsibly sourced ingredients, aligning with broader industry research showing that plant-forward diets can reduce environmental impact by up to 50% compared to traditional Western diets (EAT-Lancet Commission).

Menus are designed around seasonal availability, which not only enhances flavor and nutritional value but also reduces the carbon footprint associated with long-distance food transportation. The emphasis on responsible sourcing includes partnerships with suppliers who prioritize sustainable agriculture, ethical animal welfare, and environmentally responsible seafood practices.

# Greener Living. Better Aging.

## Enhancing the Resident Experience with Environmental Wellness

Transparency plays a critical role in this approach. Residents increasingly value knowing where their food comes from; a 2022 survey by FMI and Label Insight found that 75% of consumers are more likely to remain loyal to brands that offer transparency in sourcing.

By combining culinary excellence with environmental responsibility, sustainable dining enhances both the resident experience and the broader sustainability goals of the community.

### Culinary Commitments: A Promise to Residents

NEXDINE's culinary commitments reflect a broader promise to deliver high-quality, responsibly sourced food while supporting long-term sustainability. These commitments align with growing consumer expectations for clean, minimally processed ingredients and ethical sourcing practices.

Research from the International Food Information Council (IFIC) indicates that over 60% of consumers actively seek foods that are fresh, natural, and minimally processed. In senior living, this preference is amplified by the direct connection between nutrition and health outcomes.

By prioritizing whole foods, sustainable procurement, and nutritionally balanced menus, NEXDINE ensures that dining programs support both immediate enjoyment and long-term wellness. Continuous innovation further strengthens this commitment, allowing communities to adapt to evolving sustainability standards and resident preferences.



### Enhancing the Resident Experience

Sustainable practices contribute directly to improved quality of life for residents. Access to nutritious, responsibly sourced meals supports better health outcomes, while environmentally conscious design reduces exposure to pollutants and enhances comfort.

Research published in Environmental Health Perspectives shows that improved environmental conditions can significantly reduce respiratory and cardiovascular risks, which are particularly relevant in senior populations. Additionally, engagement in sustainability-focused programs has been linked to increased social participation and a stronger sense of purpose—both key factors in healthy aging.

In this context, sustainability is not an abstract concept; it is a tangible contributor to daily well-being.

### Operational and Financial Benefits

From an operational perspective, sustainability delivers measurable financial advantages. Energy-efficient systems reduce utility costs, while waste reduction programs improve food cost management. According to McKinsey & Company, companies that integrate sustainability into their core operations often achieve stronger long-term financial performance and risk resilience.

In senior living, these benefits translate into more stable operating models, improved occupancy rates, and enhanced brand differentiation. Communities that demonstrate a commitment to sustainability are increasingly preferred by residents and their families, particularly as environmental awareness continues to grow across generations.

# Greener Living. Better Aging.

## Enhancing the Resident Experience with Environmental Wellness

### Case Study Snapshot: Peconic Landing

Peconic Landing exemplifies how sustainability can be successfully integrated into a senior living community through its partnership with NEXDINE. By combining Blue Zone principles with sustainable dining and operational practices, the community has cultivated a culture centered on wellness, longevity, and environmental responsibility.

This model demonstrates that sustainability is most effective when it is embedded into every aspect of the resident experience—from the food served daily to the design of shared spaces and the structure of community programming.

### The Future of Sustainable Senior Living

Looking ahead, sustainability will continue to shape the evolution of senior living. Industry trends point toward increased demand for plant-forward menus, greater transparency in sourcing, and expanded use of technology to track and reduce waste and energy consumption.

As these trends accelerate, organizations that integrate sustainability into their core strategy will be best positioned to lead. The combination of environmental stewardship, operational efficiency, and enhanced resident experience represents a powerful framework for the future of senior living.

#### Sources:

- Nielsen. The Sustainability Imperative: New Insights on Consumer Expectations.
- U.S. Environmental Protection Agency (EPA). Indoor Air Quality and Environmental Health.
- Harvard T.H. Chan School of Public Health. Health Benefits of Green Spaces.
- U.S. Department of Energy. Energy Efficiency Trends in Commercial Buildings.
- ReFED. Food Waste Reduction Insights and Economic Impact.
- World Resources Institute. Food Loss and Waste and Its Impact on Climate Change.

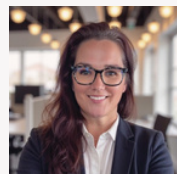
### Conclusion

Sustainable practices are transforming senior living communities into healthier, more resilient, and more engaging environments. Through its partnership with Peconic Landing and its comprehensive approach to sustainability, NEXDINE Hospitality demonstrates how environmental responsibility and exceptional hospitality can work in tandem.

By prioritizing sustainable dining, responsible sourcing, and holistic wellness, senior living communities can improve resident outcomes, strengthen operational performance, and contribute meaningfully to a more sustainable future.

### About NEXDINE

NEXDINE Hospitality is a premier provider of dining and hospitality services, dedicated to creating exceptional experiences through innovation, sustainability, and a commitment to quality. Its approach integrates culinary excellence with environmental stewardship to deliver meaningful impact for clients and communities alike.



Written by: Crystal Wright  
VP, Brand Marketing,  
NEXDINE Hospitality

- Champions 12.3. The Business Case for Reducing Food Loss and Waste.
- ENERGY STAR. Energy Efficiency in Commercial Food Service Equipment.
- EAT-Lancet Commission. Food in the Anthropocene: Healthy Diets from Sustainable Food Systems.
- FMI & Label Insight. Transparency Trends in Food and Consumer Behavior (2022).
- International Food Information Council (IFIC). Food and Health Survey.
- Environmental Health Perspectives. Environmental Impacts on Human Health.
- McKinsey & Company. Sustainability and Financial Performance.