

Sustainable Integrity

Imagine Having a Dining and Facilities Management Partner that Strengthens your Brand Integrity, Reputation, and Guest Experience



Executive Summary

Sustainability is no longer a peripheral initiative for corporations. It has become a core driver of brand integrity, stakeholder trust, and overall business performance.

Employees, clients, and partners increasingly expect organizations to operate responsibly across every touchpoint. Two of the most visible and impactful areas where this expectation comes to life are **dining services and facilities management.**

Organizations that prioritize sustainable practices in these areas are not only reducing environmental impact, they are strengthening their brand, enhancing workplace satisfaction, and creating meaningful differentiation in a competitive market. This white paper explores why sustainable dining and facilities management matter, how they influence perception and experience, and why selecting the right partner is critical to long-term success.



The Business Case for Sustainability

Corporate sustainability has evolved from a compliance-driven effort to a strategic imperative.

Today, stakeholders are evaluating organizations based on:

- Environmental responsibility
- Operational transparency
- Alignment with stated values

A company's ability to demonstrate authentic, measurable sustainability efforts directly impacts how it is perceived in the marketplace.

Importantly, sustainability is no longer judged by high-level commitments alone. It is assessed through everyday experiences such as the food employees eat, the cleanliness of facilities, and the visible practices that shape the workplace environment.

Brand Integrity and Reputation in Action

Brand integrity is built through consistency between what a company says and what it does.

Dining and facilities operations provide daily, highly visible proof points of that alignment.

When organizations implement sustainable dining programs, reduce food waste, source responsibly, and offer healthier options, they reinforce a commitment to both environmental stewardship and employee wellbeing.

Similarly, eco-friendly facilities management practices demonstrate a commitment to safety, health, and environmental responsibility. The use of environmentally safe cleaning solutions, reduced water consumption, and thoughtful resource management all contribute to a stronger, more credible brand narrative.

Sustainable Integrity

Imagine Having a Dining and Facilities Management Partner that Strengthens your Brand Integrity, Reputation, and Guest Experience

Organizations that fail to align operations with their stated values risk reputational gaps that are increasingly noticeable to employees and external stakeholders alike.

The Impact on Employee and Guest Experience

Sustainability is not just about environmental outcomes. It plays a significant role in shaping how people feel within a space.

Employees are more engaged and satisfied when they believe their workplace reflects their personal values. Dining programs that offer fresh, responsibly sourced food and transparent practices create a sense of trust and care.



Facilities also play a critical role. Clean, well-maintained environments supported by eco-friendly practices contribute to healthier workplaces, improved air quality, and overall comfort.

For clients and guests, these same elements influence perception. A workplace that visibly prioritizes sustainability signals professionalism, forward-thinking leadership, and attention to detail.

Together, these factors drive:

- Higher employee satisfaction and retention
- Improved productivity and morale
- Stronger impressions among clients and visitors

Operational Benefits Beyond Perception

Sustainable practices also deliver measurable operational advantages.

Reducing food waste lowers procurement costs and improves efficiency. Thoughtful menu planning and data-driven decision-making help eliminate overproduction.

In facilities management, eco-friendly cleaning practices can reduce water usage, limit chemical exposure, and improve long-term asset maintenance.

When paired with smart technology and sensors, organizations can further optimize operations by aligning services with actual usage patterns. This reduces unnecessary labor and resource consumption while maintaining high standards.

The result is a model where sustainability supports both environmental goals and financial performance.

The Importance of Choosing the Right Partner

While many organizations recognize the importance of sustainability, execution is where meaningful impact is achieved.

Choosing the right dining and facilities management partner is critical.

An effective partner does more than provide services. They bring:

- Proven expertise in sustainable practices
- Data-driven insights to measure and improve performance
- Technology that enhances efficiency and transparency
- A cultural alignment with the organization's values

Equally important is integration. Dining and facilities should not operate in silos. A partner that can align both functions under a cohesive sustainability strategy delivers greater consistency, stronger results, and a more seamless experience.

Sustainable Integrity

Imagine Having a Dining and Facilities Management Partner that Strengthens your Brand Integrity, Reputation, and Guest Experience

What to Look for in a Sustainability-Focused Partner

Organizations should evaluate potential partners based on several key criteria:

- A demonstrated commitment to sustainability through measurable outcomes
- The use of environmentally safe, high-performance products and practices
- The ability to reduce waste, conserve water, and optimize resources
- Integration of smart technologies to enhance operational efficiency
- A collaborative approach that aligns with organizational culture and goals

Selecting a partner that embodies these qualities ensures that sustainability is not just implemented but sustained and continuously improved.

The Strategic Opportunity

Sustainable dining and facilities management represent more than operational improvements. They are strategic tools for strengthening brand integrity, enhancing reputation, and elevating the overall workplace experience.

Organizations that take a proactive, integrated approach will be better positioned to meet evolving expectations, attract and retain talent, and differentiate themselves in the marketplace.

Conclusion

Sustainability is now a defining element of how organizations are evaluated by employees, clients, and the broader community.

Dining and facilities management sit at the intersection of operations, experience, and perception. When executed thoughtfully, they become powerful drivers of brand alignment, employee satisfaction, and operational excellence.

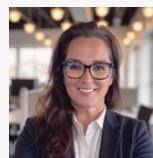
The organizations that lead in this space will be those that move beyond intention and invest in partners and practices that deliver real, visible impact every day.

Your sustainable solution isn't easy but it can be made simple

Creating a sustainable workplace requires more than isolated initiatives. It requires a partner who can bring together dining and facilities management into a cohesive, high-impact strategy.

NEXDINE, together with XENDELLA Facilities Management, helps organizations deliver on their sustainability commitments through innovative dining programs and eco-friendly facilities solutions. From reducing food waste to implementing environmentally safe cleaning practices that conserve water and leverage smart technology, our approach is designed to drive measurable results.

Connect with our team to explore how your organization can strengthen its brand, enhance employee and guest experiences, and build a more sustainable future. info@nexdine.com



Written by: Crystal Wright
VP, Brand Marketing,
NEXDINE Hospitality